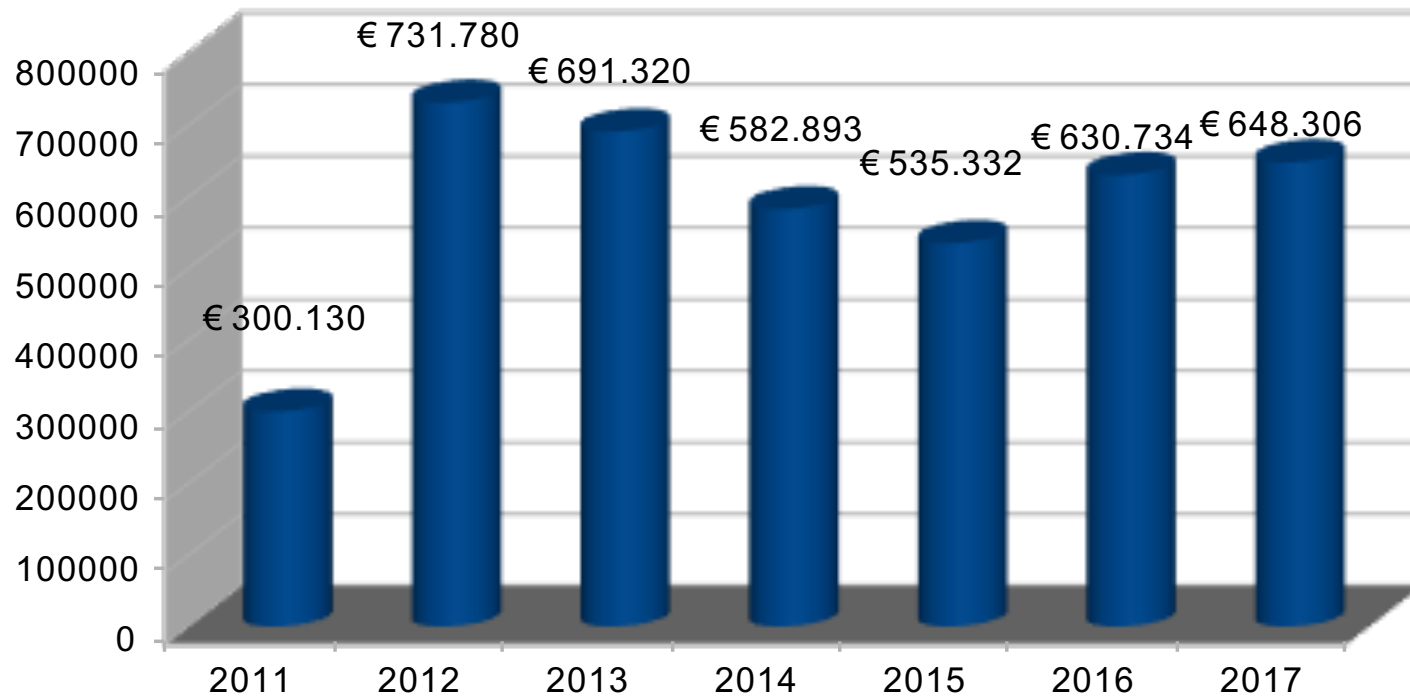


# CSM Expenditures 2011 - 2017 (Euros €)

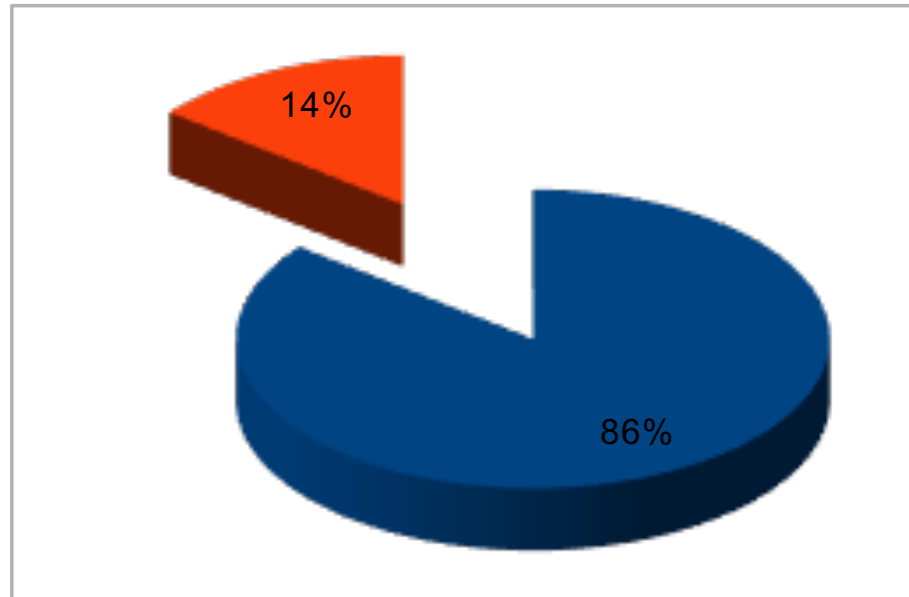
Year	2011	2012	2013	2014	2015	2016	2017
Amount	€ 300.130	€ 731.780	€ 691.320	€ 582.893	€ 535.332	€ 630.734	€ 648.306



# CSM Funding contribution 2011 - 2017 (Euros €)



Governments and International Organizations	86%
NGOs and CSOs	14%



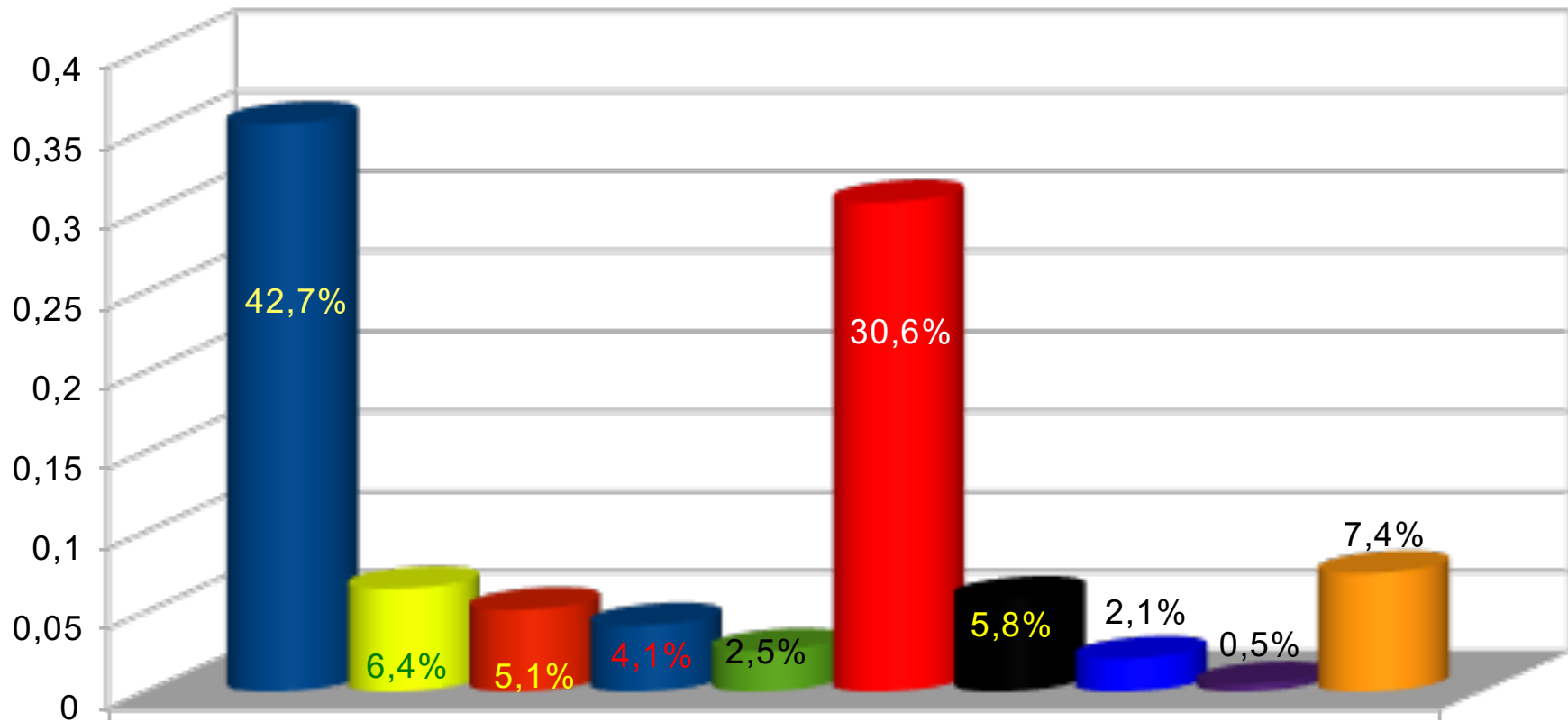
■ Governments and International Organizations      ■ NGOs and CSOs

# Contributions of Gov. and Inter. Inst. 2011-2017 (€)



## 3.526.643 Euros €

EU	Brazil	Spain	Norway	Italy	Switzerland	Germany	France	FAO	IFAD
35,5%	6,4%	5,1%	4,1%	2,5%	30,6%	5,8%	2,1%	0,5%	7,4%



1

■ EU ■ Brazil ■ Spain ■ Norway ■ Italy ■ Switzerland ■ Germany ■ France ■ FAO ■ IFAD

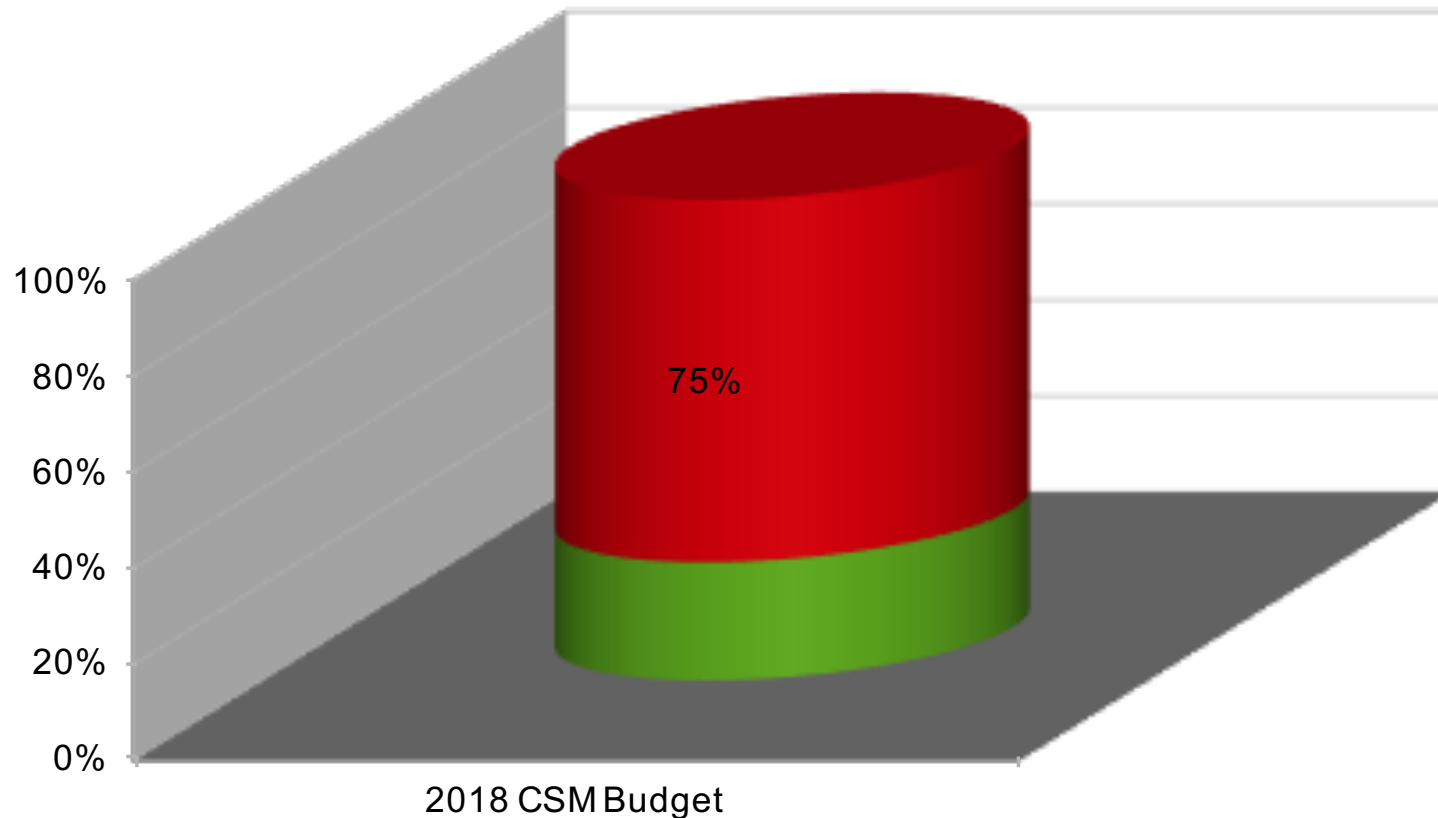
# CSO financial & in-kind contributions to CSM budget



<b>NGO/CSO FINANCIAL CONTRIBUTION 2011-2017</b>	
<b>€ 593.891</b>	
<b>14%</b>	
<b><u>NGOs/CSOs IN KIND CONTRIBUTION</u></b>	
About 130-150 self funded participants to CSM Forum every year	€ 200.000
From 3 to 10 self funded participants to 10-12 CFS OEWG mtgs per year	€ 124.800
Voluntary work of 5-8 facilitators of CSM working groups that dedicate 30% of their time to support CSM WG every year	€ 108.000
CSO Publications on the use and monitoring of CFS outcomes per year	€ 25.000
<b>TOTAL of one year NGOs/CSOs In Kind contribution</b>	<b>€ 457.800</b>
<b>NGO/CSO FINANCIAL &amp; IN KIND CONTRIBUTION 2011-2017</b>	
<b>€ 3.340.691</b>	
<b>49%</b>	

# CSM 2018 Budget & funding gap (Euro)

CSM Budget 2018	Amount	Ensured contributions	Funding gap
2018 CSM Budget	€ 725.489	€ 178.265	€ 547.224 75%



# CSM 2018 Budget funding gap (Euros €)



<b>BUDGET FOR THE CSM activities in 2018</b>				
Item	Nr.	Total Budget (Euros)	FUNDS received	FUNDING GAP
<b>1. Participation in the CFS AG meetings</b>				
		<i>sub-total</i> € 81.900	€ 22.690	€ 59.210
<b>2. CSM policy working groups &amp; participation in CFS inter-sessional</b>				
		<i>Sub total</i> € 121.020	€ 60.038	€ 60.982
<b>3. Support monitoring and implementation of CFS outcomes</b>				
		<i>Sub total</i> € 167.370	€ 31.093	€ 136.277
<b>4. Annual CSM CC meeting, Forum &amp; participation in Annual CFS Plenary</b>				
		<i>sub-total</i> 150.320 €	€ 0	€ 150.320
<b>5. Secretariat</b>				
		<i>sub total</i> 144.600 €	57.695 €	86.905 €
<b>6. Accountability, monitoring and contingency costs</b>				
		<i>sub total</i> 16.000 €	0 €	16.000 €
		<b>PARTIAL</b> 681.210 €	€ 171.516	€ 509.694
<b>Administration fee 6,5%</b>		44.279 €	€ 6.749	€ 37.530
		<b>TOTAL</b> 725.489 €	178.265 €	547.224 €